

Walmart Community Mural Program

Walmart Community Mural Program
4th Edition

Foreword

Growing up in small-town South Carolina during the 60s, my access to arts education programs was limited. I first experienced the arts in late middle school when my teachers began a regular assembly program led by students. I came alive during these programs. Being on stage opened a new, transformative world of self-expression that was critical in shaping who I am today.

Science has proven the restorative, healing power of the arts - something I repeatedly experienced during my 32 years in the Army through both cultural engagements and even esprit de corps. I vividly remember a young service member who raised morale throughout the unit by simply playing his saxophone post flight missions to signal all members had returned safely. Those beautiful notes resonated with the unit and were often the calm needed to offset episodic moments of chaos and hell.

If a simple song can emotionally lift a group of service members, imagine what deeply personal, public facing art can do for a community. The work from NOW Art champions in communities across the country is astounding and equally impactful. Bringing beautiful, positive art into communities – with no barrier to entry – creates a space where the full gamut of individuals in America can see themselves represented in art – inspiring a new artistic movement. This work is so deeply important and helps to ensure that every individual in every community in this country can experience art throughout their lifetime.

– **General Nolen Bivens**

President and CEO, Americans For the Arts

About The Program

A vibrant pictorial extending across America; the Walmart Community Mural Program is among the largest public-facing art collections in the country. Featured in a growing number of facilities across the nation, the murals serve as a creative canvas to celebrate communities, inspire connection, and instill pride in both Walmart associates and customers.

Drawing inspiration from the heart of each neighborhood, artists translate what is unique or special about each community into the murals. Each artwork is a one-of-a-kind piece, giving artists the opportunity to showcase their work to thousands of people daily. Often installed during a store remodel project, Walmart's Community Mural Program provides a unique platform to amplify the voices and stories of diverse communities across the nation. When considered together, the murals tell a story of the American communities, rich with colorful landscapes, festivals, culture, recreation, agriculture, industry, people, traditions, and legacies that are sometimes older than the country itself!

What started as a temporary art installation in three cities has evolved into a nationwide mural program, and Walmart is the only retailer with a program of this scale. NOW Art, a public art agency, identifies talented local, regional, and national artists to help creatively interpret the distinctive community attributes shared by each local store team that form a collection of artworks now enjoyed throughout the country.

Art, by its very nature, has the power to illuminate, educate, and spark dialogue. Walmart's Community Mural Program stands as a testament to this transformative power and demonstrates the company's commitment to the arts, cultural enrichment, and the communities it serves. As the program continues its journey, it promises to be a lasting source of inspiration and connection, reflecting the beauty and cultures found across America.



Susan Watkins
KENAI LIFE

Local artist Susan Watkins paints a picture of Kenai that highlights some of the area's beloved natural bounty. "Living on the Kenai Peninsula rewards us with nourishing, wild-caught meals served in a majestic setting. We hunt and fish together, happily sharing in our abundance." In her murals, Susan brings the great outdoors to inside walls so that everyone can experience awe-inspiring landscapes.

“Living on the Kenai Peninsula rewards us with
nourishing, wild-caught meals served in a majestic
setting. We hunt and fish together, happily sharing
in our abundance.”

– Susan Watkins



Charles Swerdlow
HUNTSVILLE

In addition to being the most populous city in the state of Alabama, vibrant Huntsville has played a crucial role in the history of the aerospace industry. Affectionately known as Rocket City, Huntsville is home to NASA's Marshall Space Flight Center, as well the U.S Space and Rocket Center. Completing this picturesque scene are the Huntsville skyline and the nearby Flint River, a beautiful place and a paddler's favorite.



Julia Fordyce
STRETCH YOUR WINGS TO SOAR

Inspiring childlike wonder, the Apple Valley Airshow attracts many to the Mojave Desert. Here, a child playing with a toy airplane serves as a symbol of the joy and freedom of play. The wide-open skies and Joshua tree-spotted landscape are a nod to the wildness in all of its inhabitants; aerial enthusiasts and inner children alike. Julia Fordyce is a California artist who is influenced by memory, connection, and dreams.

Apple Valley, CA • Store No. 2333



Dorothea Taylor
HEART OF OSPREY

Osprey is a charming coastal town with many beautiful and exciting elements. Artist Dorothea Taylor combines some of Osprey's most iconic features like the Blackburn Point Bridge, the Florida Scrub Jay, the Osprey Hawks, and marine wildlife. Embracing each new day as an opportunity for exploration, Dorothea tries to leave an indelible mark on the world of art while inspiring others to embrace their own creative potential.

Osprey, FL • Store No. 5264



Addison Green
JUMPIN' AND JIVIN' IN JONESBORO

Jonesboro has everything, from world-class academics to some of the prettiest outdoor places in the Natural State. Our historic downtown district is where you can grab a tasty meal or see a live show. A-State plays a huge role in helping our community continue to thrive through education. Catch a breath of fresh air and enjoy beautiful outside scenery at Craighead Forest Park and Crowley's Ridge Nature Center.

Jonesboro, AR • Store No. 6943



Rose Anne Ost
DURANGO CALLED, I ANSWERED

Calling Colorado home for over 40 years, traditional painter Rose Anne Ost felt the pull of her past in creating this mural of Durango. Inspired by happy memories shared with her mother, we see the Durango and Silverton Narrow Gauge Railroad winding its way across the beautiful scenery of the Weminuche Wilderness, a place of serenity where eagles soar and nature seems boundless.

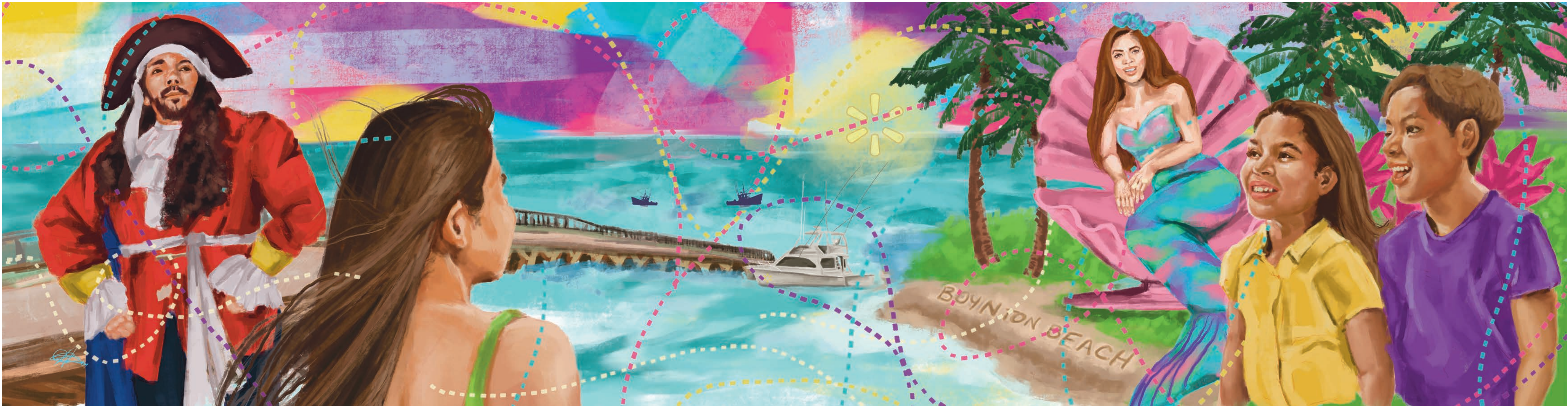
Durango, CO • Store No. 2270



Tony Diaz
BEHIND THE REDWOOD CURTAIN

Humboldt County's microclimate and temperate rainforest is like nothing on this planet. Here, artist Tony Diaz highlights some of the diversity and beauty found in and around Eureka, one of the largest coastal cities in the Pacific Northwest. Tony is an illustrator and muralist based in the shaded redwoods of Northern California. His work is inspired by the creatures of the natural world, storytelling, and his adventures.

Eureka, CA • Store No. 5629



Amanda V. Howell Whitehurst
BOYNTON BREEZES

Bright and colorful, Boyton Beach inspires a feeling of fun, family, positivity, and togetherness. Every Halloween weekend, daring swashbucklers and gorgeous sea-maidens bring magical moments to the community at the Haunted Pirate Fest & Mermaid Splash. Amanda Howell Whitehurst is a Florida illustrator and oil painter. She creates vibrant portraits through rich earth tones, expressive brushstrokes, and a focus on detail.

Boynton, FL • Store No. 3011



Sophie Groenstein
BROOKLYN COMMUNITY

Brooklyn has a strong agricultural history that endures today. The Brooklyn Fair is one of the ways our community shares the fruits of our labor. From livestock contests to carnival rides, this yearly tradition celebrates farming at its best. Hard work and dedication are values we learn from the harvest. New England artist Sophie Groenstein brought this piece to life from her memories of working on Connecticut farms.

Brooklyn, CT • Store No. 5777



Daniel Smith
A DREAM OF ADEL

This artwork depicts some of the simple pleasures of everyday life in Adel. In an idyllic lake scene, a group of family and friends gather among the daylilies while embarking on a leisurely canoe adventure. Adel is a place where the beauty of the outdoors fosters meaningful connections and cherished moments. Through this artwork, viewers are invited to discover nature and create warm memories with their loved ones.

Adel, GA • Store No. 7194



Aerica Raven Van Dorn
WELCOME TO THE GARDEN

Colorado-based artist and illustrator Aerica Raven says, "I've always been blown away by how central nature is to this area, and as soon as I heard about this project, I knew Garden of the Gods would be my main focus." In vivid colors and expressive linework, we also find nods to local activities such as rock climbing and mountain biking, as well as the majestic Pikes Peak and the United States Air Force Academy.

Colorado Spring, CO • Store No. 1896

"I've always been blown away by how central nature is to this area, and as soon as I heard about this project, I knew Garden of the Gods would be my main focus."

– Aerica Raven Van Doren



Maddison Poole
OCEAN OF STARS

A starry sky twinkles above Merritt Island, where outer space and the ocean meet to inspire. Located on the Space Coast, the Kennedy Space Center is where visitors can explore America's voyages beyond Earth. Outdoor enthusiasts can catch a wave at Cocoa Beach. Our natural beauty is unmatched with blooming flowers and flourishing wildlife. Madison is a Florida artist who does illustrations, comics, and visual development.



Elyssa Leininger
MILK RIVER MORNING

Inspired by Havre's rugged landscapes and vibrant skies, artist Elyssa Leininger combines the Bear Paw Mountains, the Wahkpa Chu'gn Buffalo Jump, and the Milk River to create a majestic scene of the area. Here, the bison, a symbol of resilience, watches over the land and celebrates the wild spirit of the American West. Elyssa is a public artist known for vividly painting Big Sky Country and Western life.

Havre, MT • Store No. 4247



Thomas Velez
SAN ANTONIO: CRADLE OF LIBERTY

This artwork by Texas-based Tom Velez highlights the excitement of life in San Antonio. Using vibrant colors and graphic shapes, his composition features some of the city's most iconic landmarks including the Alamo, the Riverwalk, and Hemisphere Plaza. Tom has been a professional illustrator, designer, and art director for over fourteen years. His work tells stories and evokes emotions through visually compelling imagery.

San Antonio, TX • Store No. 5490

Jennifer Smiley
MESA'S WILD OASIS

Surrounded by the rugged Arizona landscape, Mesa is a city that celebrates its natural beauty and community. A golfer swings his iron high, relaxing with friends on the course. Outdoor adventures are a big part of life in Mesa where you can soak up the sun floating on the Salt River or take a hike at the Lost Dutchman State Park. Arizona-born and raised, Jennifer Smiley's artwork draws inspiration from her home state.





Drake Arnold
THE SPIRIT OF VOLUSIA COUNTY

Growing up in North Central Florida, artist Drake Arnold often took beach vacations in Ormond, Daytona, and Ponce Inlet. Some of his favorite memories as a child were of getting rolled by the Atlantic waves, playing games at the Daytona boardwalk arcades, and spending time with family. Drake is a mural artist whose work can be described as containing elements of nature, fantasy, surrealism, and classical inspirations.

Holly Hill, FL • Store No. 3862



Carlos Pons
SAILS OF CELEBRATION

Located on the beautiful Gulf Coast, Tampa is where tradition and diversity come together for boundless ways to have fun. Hearty festival goers wave the Jolly Roger to cheer on Gasparilla, Tampa's annual parade where pirates invade the city. The ship comes to shore by the downtown waterfront where outdoor attractions like the Riverwalk make this growing community stronger. Carlos Pons is a local muralist and painter.

Tampa, FL • Store No. 5760



Karina N. Cruz Ortiz
BRIDGING NATURE AND HISTORY

Whitemarsh Island, with its green marshlands and coastline, blends natural beauty with history. Talmadge Memorial Bridge spans over the Savannah River to welcome all. Covered by live oak trees and Spanish moss, the Victorian-era homes found in the downtown district takes us a step back to another time. Dolphins play in the waters by Tybee Island Light Station and Museum showing the harmony between people and wildlife.



Taylor C. Adams
ROCKET CITY

Art and science are two sides of the same coin, and no place exemplifies that more than Huntsville. Local artist Taylor C. Adams says, “Having grown up in the Huntsville music scene, I quickly discovered that Rocket City was a hotbed of culture, and as an artist, I felt at home.” Taylor is a freelance illustrator creating artwork for comics, music, film, and TV. His technique employs both traditional and digital methods.

“Having grown up in the Huntsville music scene, I quickly discovered that Rocket City was a hotbed of culture, and as an artist, I felt at home.”

– Taylor C. Adams



Willea Zwey Yang
COLLECTIVE MOMENTUM

When thinking of Urbana, one might be drawn to the University of Illinois Urbana-Champaign — a campus full of youth, dedication, and diversity. This vibe spreads into the whole town, especially its charming historic downtown. Illinois-based artist Willea Zwey says, "As an architect, I love how the town's character blends with education, evolving into a lively city that's constantly moving forward with its community."

Urbana, IL • Store No. 5403



Katie Morris
ESCAPE IN OP

Kansas-based artist Katie Morris was inspired by a family day exploring Overland Park's local gems for this mural. Found downtown, Clock Tower Plaza is where our community gathers for events like the farmer's market. You can learn about animals like this adorable goat at Deanna Rose Children's Farmstead. Overland Park Arboretum and Botanical Gardens has winding paths to take a stroll among its beautiful scenery of flora.

Overland, KS • Store No. 1599



Julie Xiao
HARMONY IN HERITAGE

Inspired by her state's agricultural landscape, Indiana artist Julie Xiao sought to capture some of Scottsburg's many charms, with the County Courthouse symbolizing beloved community traditions such as the Mayberry Festival, while the Veterans Memorial stands in honor of all those who have served. In her art, Julie aims to tell compelling narratives by mixing traditional styles with modern themes.



Yifat Fishman
MOUNT PLEASANT: COLORS OF COMMUNITY SPIRIT

Created in celebration of Mount Pleasant, this colorful piece dynamically depicts the city's strong industrial and agricultural heritage, as well as the plentiful outdoor adventures found at its nearby lakes. Texas-based artist and illustrator Yifat Fishman loves creating eye-catching images that bring joy to people. Her creative spark stems from the fascinating connection between people, culture, and nature.

Mount Pleasant, TX • Store No. 131



Carla Garrison-Mattos
GAZE UPON GALENA

Carla Garrison-Mattos says, "I'm an Illinois girl at heart! Born and raised in Elgin, Galena was a beautiful place to visit with my family." This mural explores the idea of an afternoon at Grant Park's gazebo, as well as the many things that Galena has to offer, including the hot air balloon festival and winter skiing. As a muralist, Carla prides herself on building relationships and contributing back to the community.

Galena, IL • Store No. 5044



Kelly Sheridan
GOLDEN EARTH, GOLDEN HOUR

This mural is inspired by the harmony between people and the earth. The reverence, appreciation, and cultivation of the land in Iowa, is a unique relationship. People have a closeness with both the outdoors and agriculture that defines the culture. Here, the artist features a mother and her two children walking towards a golden field, symbolizing both family and a new generation of Iowans.

Sioux Center, IA • Store No. 1152



Kerian Massey
KILGORE, CITY OF STARS

Nicknamed the "City of Stars," Kilgore is rich with Southern hospitality and a booming personality that's as big as Texas itself. The glittering stars that light up the 60 oil derricks and the spunky Rangerette show a glimpse of its small-town charm. From a booming oil industry spurred by the largest oil field in the country to being the home of the world's best collegiate drill team, the Kilgore community shines bright.



Emmanuelle Mariategue
BUILDING COMMUNITY

"I am inspired by the people in Texas and the sense of community," says local artist Emmanuelle Zaleta Mariategue. "I have built numerous relationships with people, from the service industry to the art scene, and I wanted to portray the importance of building a community by depicting a simple street party." Emmanuelle strives to tell stories in his illustration work, while also teaching art to young children.



Vanessa Gomez
COMMUNITY BLOSSOMS

From a rich history of resilience and growth, "Community Blossoms" shows the spirit of pride and neighborly love of the Argentine neighborhood in Kansas City. Each year, the community puts on the Silver City Days Parade and Festival, where a sense of unity is celebrated through culture, dance, parades, and food. Our life journey is enriched by the traditions that honor the past while looking ahead to the bright future.

Kansas City, KS • Store No. 6172



Thais Bolton
THE FLOW OF LIFE

Florida's beautiful nature is a daily inspiration for those who have eyes to see. The wind that moves the grains of sand in the dunes and the tides inspire us to paddle in the flow of life, following the good winds towards the sun. Let us paddleboard more and more in the flow of life every day. Thais Bolton is an author and illustrator who loves timeless art and stories that awaken something different in our hearts.

Santa Rosa Beach, FL • Store No. 8861



Gabrielle Wildheart
VANCOUVER ROSES

"Parks are such important centers of community life. With this piece, I wanted to highlight Esther Short Park and Fort Vancouver - the namesake of the city," says Washington artist Gabrielle Wildheart. Esther Short Park is known for its water features where children play, as well as its rose gardens. Rooted in social awareness, Gabrielle is an award-winning public artist who paints large-scale murals for urban spaces.

Vancouver, WA • Store No. 2550



Esther Moorehead
WAYNESBORO HIGHLIGHTS

"Community is essential for humanity to thrive," says artist Esther Moorehead. "I love creating art that depicts a community, in the hope it will bring a smile or a memory." In this cheerful watercolor landscape of Waynesboro, the artist creates a sense of home and nostalgia, showcasing specific vignettes, including the water tower, iconic bird dogs, and some of the local businesses on Liberty Street.

"I love creating art that depicts a community, in the hope it will bring a smile or a memory."

– Esther Moorehead



Andrew Houser
OLATHE

Decorated with yellow sunflowers, Olathe's heart shines brightly in this artwork. A young dreamer, hand outstretched, catches the wind as a symbol of Olathe's soaring aviation heritage. Friends enjoy summer fun on the waters of Lake Olathe. The parallel railroads, representing the city's industry and BNSF Railway, connect us to the wider world. Andrew Houser is an illustrator, professional conga line dancer, and designer.

Olathe, KS • Store No. 4198



Kelsey M. Phillips
FESTIVITIES AT RUSSELLVILLE SQUARE

Framed in green tobacco leaves, this mural, by artist Kelsey Phillips, depicts a joyous scene of the Russellville community coming together in celebration of the Logan County Tobacco and Heritage Festival at the iconic town square. Here, families and onlookers gather on the street to honor their city's history, waving greetings at the marching bands, fire trucks, and riders on horseback who pass on by.

Russellville, KY • Store No. 736



Rita Sabler
ONE FLIGHT OVER NEW MARTINSVILLE

A flock of birds gracefully soar above this picturesque view of New Martinsville. In this scene, history and nature meet, with soft washes of greens and blues highlighting the Ohio River Valley in its full splendor. In the heart of this scene stands the Wetzel County Courthouse, which commands attention with its exquisite medieval-style architecture of red bricks and towering clock spire.

New Martinsville, WV • Store No. 2684



Tracy Ann Holmes
SURROUNDED BY BEAUTY

In this dramatic Prescott Valley piece, Arizona artist Tracy Ann Holmes illustrates a colorful scene highlighting the incredible Bradshaw Mountains. Here, under a stormy monsoon sky, the mountains accentuate the rugged landscape as the sun paints its warm glow over everything. The lightning bolt adds extra drama as the rain brings much-needed water to the bountiful wildlife, including local coyote and desert cottontail.



Garth Glazier
CITY OF TREES

Canton is a pleasant city of quiet, tree-lined streets. In creating this mural, Michigan-based artist Garth Glazier looked to the tree silhouette found in the city logo. He says, "Trees have always been a great source of inspiration in my art." This pastoral scene highlights some of what makes Canton special, including references to Heritage Park, the old schoolhouse, and the city's history as the sweet corn capital.

Columbus, OH • Store No. 2426



Maggie Tseng
HOMAGE TO ROCHESTER HILLS

Painted in acrylics, this mural pays homage to Rochester Hills, celebrating its rich cultural heritage through iconic landmarks like Yates Cider Mill, Meadow Brook Hall, Downtown, and Stoney Creek Metropark. While in the distance, inspired by the story of the Three Fires Confederacy, a majestic tree honors the Indigenous peoples of the Ojibwe, Odawa, and Potawatomi tribes, who shaped the region's history and legacy.

Rochester Hills, MI • Store No. 2354

Stephish Liu
RUNNING TOGETHER IN HEART AND SPIRIT

In this Chelmsford scene, runners from all walks of life push forward in the John Carson 2-Mile Road Race waving American flags to show off their patriotic spirit. They run past different landmarks. The background features the Chelmsford Center, a beloved gathering place for the entire community. On the right, there is the Chelmsford Ginger Ale Plaza, a proud symbol of the town's historical and cultural heritage.

Chelmsford, MA • Store No. 2903





Banks Compton
MAGIC NEW ORLEANS

Jazzy music notes swirl in the air with the magic spirit of New Orleans. The Second Line, a staple in almost every parade, can be seen stepping off a trolley to spread joy with their spectacular performances. These trolleys help both visitors and locals stay connected to what's happening in the city. A couple shares a world-famous NOLA beignet - a pillowy Creole treat that's perfect for adding something sweet to your day.

New Orleans, LA • Store No. 3167



Morris Danila
VENTURE INTO SEASONS

This mural by Morris Danila showcases the Leominster State Forrest, local apple orchards, and the invention of the plastic pink flamingo lawn ornament we all know and love. "The inspiration behind this mural signifies the importance of exploring nature and vastness," says the artist. Morris is currently studying animation while dabbling in many mediums and discovering new ways of expressing art to the world.

Leominster, MA • Store No. 2964



Bob Carlson
SCENIC CULPEPER

"I am honored to create a mural celebrating the people and culture of the vibrant community of Culpeper," says artist Bob Carlson. This piece highlights the city's strong agricultural heritage. With the scenic Blue Ridge Mountains on the horizon, the central LOVE sign is surrounded by bountiful animals and crops to depict this enduring legacy. Bob is a painter whose work reveals our shared experiences of time and culture.

Culpeper, VA • Store No. 2136

"I am honored to create a mural celebrating the people
and culture of the vibrant community of Culpeper."

– Bob Carlson



Mallori Taylor
YEAR-ROUND EXHILARATION

With this piece, local artist Mallori Taylor wanted to celebrate the history-making that Hayward is known for, namely the American Birkebeiner and the Lumberjack Bowl International Competition. These inspiring events showcase the strength of our collective human physicality, spirit, and communities. Mallori is a professional artist working to create visually stunning works of art for a variety of clients.

Hayward, WI • Store No. 3245



Dominique Ramsey
LAUREL PARK

For this colorful mural, the artist was inspired by the thrilling energy found in Laurel Park's racing track and the delicious food found at the Dutch Country Farmer's Market. Under a sky streaked with shades of orange, gold, and lavender, three jockeys rush to the finish line vying for first place. While opposite, gigantic fruits, vegetables, bread, and other goods pop out behind the marketplace to add a whimsical touch.

Laurel, MD • Store No. 1985

Kate Fitzpatrick
THE ZACHARY BRONCO

In this colorful piece, artist Kate Fitzpatrick celebrates the community of Zachary, as well as its iconic culture. Here, beautiful southern magnolia flowers surround a majestic chestnut Bronco horse. The leather saddle pays homage to the indomitable Louisiana spirit with its intricate details, including symbols of crawfish and reins of Mardi Gras beads, while the capital "Z" on the fender symbolizes the city.

Zachary, LA • Store No. 428





William Sweeney
THE CITY OF ST. CLOUD

The history, landscape, and people that merge into the city of St. Cloud, on the banks of the Mississippi River, inspired this image. Children are placed in the center to represent the continuous generations of effort and commitment that strengthen this community daily. Each element is a different story united into a single vision of St. Cloud, a community that embodies a love of the arts, the outdoors, and industry.

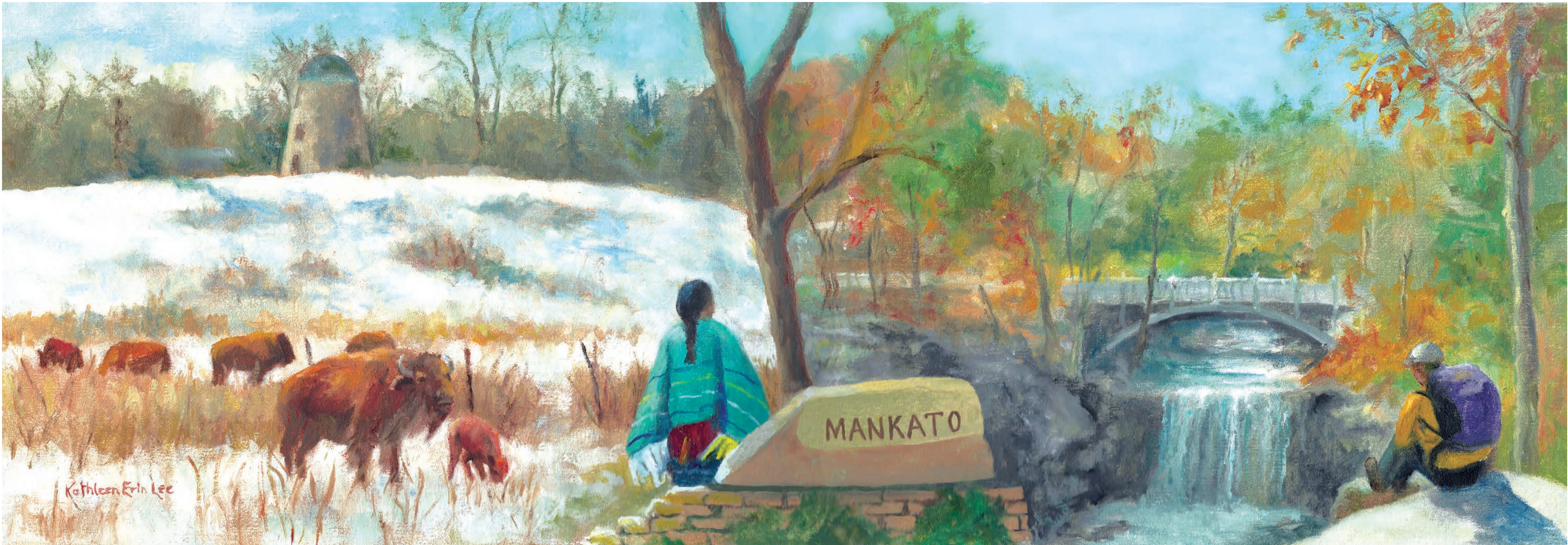
St. Cloud, MN • Store No. 3088

Herb Willey
BRIDGING THE PAST AND THE FUTURE

Mississippi artist Herb Willey contrasts industry and history in this Pascagoula artwork. Ingalls Shipbuilding, with its modern structures, adds visual interest to the historic community found on the opposite side. Herb hopes this mural encourages people to visit the old town sites such as the lighthouse and the railway station, saying fondly, "I never tire of trying to capture these historic locations in watercolor."

Pascagoula, MS • Store No. 1066





Kathleen Erin Lee
EXPLORE MANKATO

Inspired by the changing seasons and beauty of Minneopa State Park, here we see Bison roaming free upon the snow, while a hiker admires a view of the waterfall. The Seppman Mill adds a sense of history to the scene. The Native American woman represents the local Mahkato Mdewakanton Association that hosts an annual powwow honoring their traditions and building bridges between Dakota and non-Dakota people.

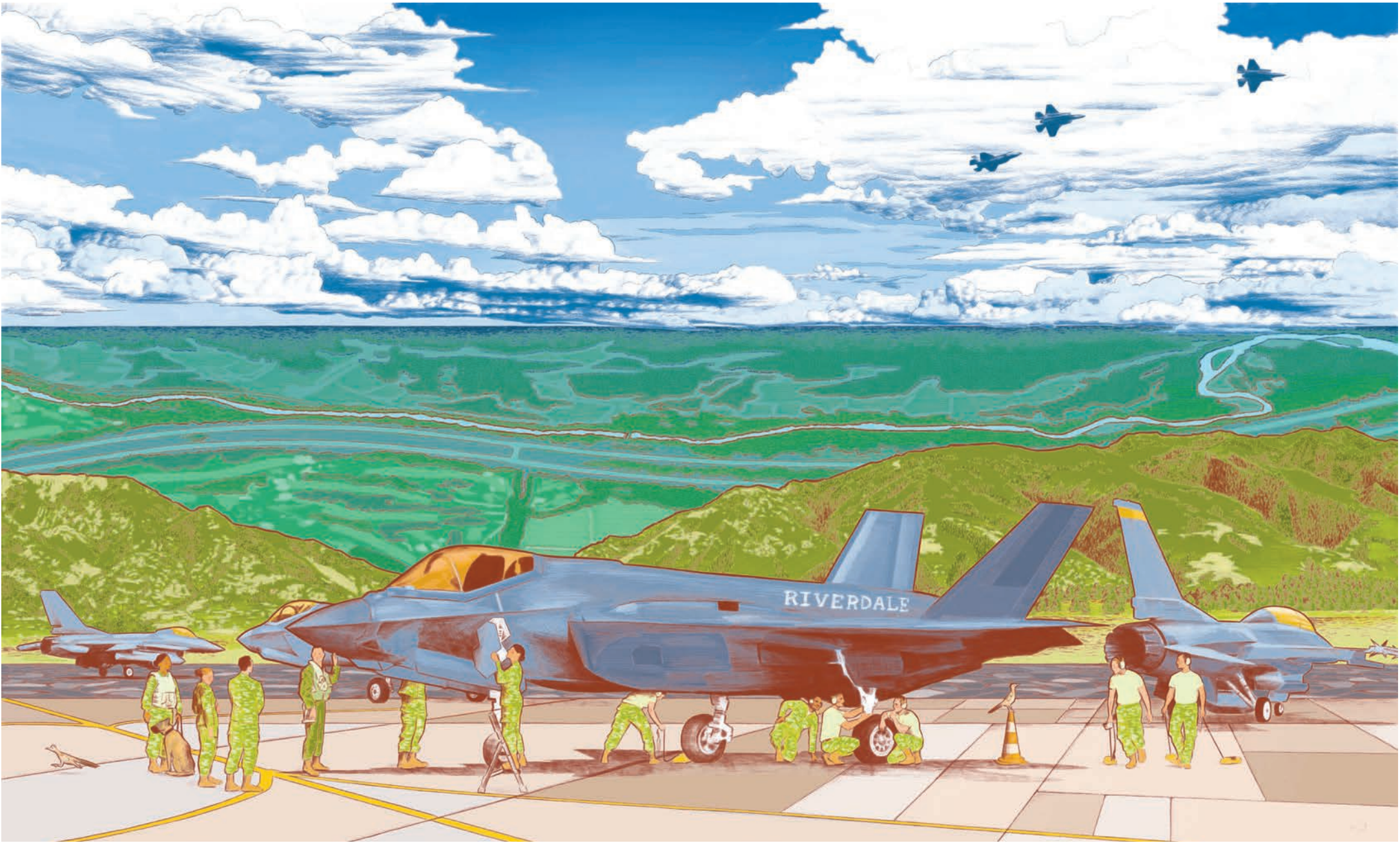
Mankato, MN • Store No. 1473



Adrienne Luther
A JOYFUL DUET AT 18TH AND VINE

Inspired by the iconic scene in the film “Big”, this mural, by Missouri artist Adrienne Luther Johnson, highlights the duet of those joyful cornerstones of Kansas City: music and sports. Here, recreation shines at nearby 18th and Vine, depicted as an eccentric area of patterns and architecture, while the energy and vibrancy of the Chief’s recent 2024 Super Bowl win at Arrowhead Stadium makes this mural move and groove.

Kansas City, MO • Store No. 2955



Jessica Sarah Beach
JET FUEL. SMELLS LIKE FREEDOM.

Two road runners playfully infiltrate the flightline at the Hill Air Force Base in Riverdale. Riverdale is a thriving city filled with military excellence and nature. Home to the 75th Air Base Wing, Hill AFB is an important part of the community, with over 22,000 airmen and civilians employed. Threading life through the city, Weber River brings people together for fun outdoor activities such as kayaking and fishing.

Riverdale, UT • Store No. 1708

Haley Kirton
MARDI GRAS IN THE CRESCENT CITY

"New Orleans is the epitome of Louisiana culture, and I am so proud to create a mural for a city that I absolutely love," says artist Haley Kirton. Here, we find a celebration of some of the city's greatest contributions, including music, arts, a sense of community, and (of course) Mardi Gras! Haley is an illustrator who loves portraiture and character design. She has two cats named Ripley and Klaus.

New Orleans, LA • Store No. 5022





Aimee Cozza
GOLDEN HOUR

“When incorporating elements that speak about Woodsville, it was easy to pluck from the natural beauty of New Hampshire,” says artist Aimee Cozza. This mural depicts the city at the golden hour, with its sprawling mountains and burbling rivers, to landmarks such as the train station and Haverhill-Bath Covered Bridge. Aimee is an illustrator and graphic designer, as well as a graduate of New England College.

“When incorporating elements that speak about
Woodsville, it was easy to pluck from the natural
beauty of New Hampshire.”

– Aimee Cozza



Emma Brittain-Hardy
A LIGHT ON OSWEGO

Under twinkling stars, the Oswego Harbor West Pierhead Lighthouse shines brightly while the community enjoys a night at the vibrant Harborfest. The scene transitions from foamy waves splashing over the lighthouse to a father and daughter duo enjoying the fireworks, rides, and games at Harborfest. These images together convey protection, celebration, and community all in one. Emma Brittain-Hardy is a multimedia artist.



Linda Scholberg
CONNECTING PEOPLE TO NATURE

Washington-based artist Linda Scholberg drew inspiration for this piece from the Pacific Northwest's beautiful nature and incredible wildlife. "I love exploring the outdoors, especially our local beaches," says Linda. "We are so blessed to live in this incredibly gorgeous state." Using a brilliant color palette and dynamic linework, the artist hopes to bring people closer to the land and sea through her mural.

Bellingham, WA • Store No. 2450



Heidi Pitre
COLUMBIA FESTIVAL

Music has the power to bring together people from all walks of life. This artwork depicts a joyful celebration of family, community, and friendship set against the backdrop of Columbia's iconic 'columns'. The pride of our university also unites us as we come together to support our teams and promote education and learning. Heidi Pitre is a passionate artist who loves Missouri due to its rich culture and community.

Columbia, MO • Store No. 1103

Raman Bhardwaj
SUNRISE SYMPHONY ON THE FARM

Inspired by Clinton's agricultural heritage, North Carolina artist Raman Bhardwaj imagines a farmland scene that invites us into a world of peace and harmony. Roosters, hens, and turkeys peck and strut, basking in the gentle glow of the sun, while a group of contented pigs add a touch of whimsy. A professional artist since 2000, Raman enjoys exploring a variety of styles ranging from photorealism to illustration.

Clinton, NC • Store No. 2580





Elsa De La Cruz Zarduz
IN SEARCH OF THE NORTH STAR

Inspired by the symbolic North Star, artist Elsa Zarduz portrays Salem through its history and culture. Spread across a field of green, the quilts and cabins honor the city's role as part of the Underground Railroad. Abundant vegetable baskets represent the prosperous farming community. A Quaker football player racing across the field nods to Salem High School, while a family gazing towards the sky embodies hope for all.

Salem, OH • Store No. 2910



Kurt Chang
SNOW BEE

Inspired by the industrious honeybee, Utah is nicknamed the "Beehive State" to symbolize the values of hard work and unity. Likewise, its capital, Salt Lake City, flourishes because of its rich cultural diversity and community. As a nod to the state's title of "The Greatest Snow on Earth", we find a skier leaping into the sky, while the Eagle Gate Monument towers above as a piece of an enduring legacy.

Salt Lake City, UT • Store No. 3589



**Joshua Rivaldo
VIEWS**

Lancaster has a variety of awe-inspiring views to see. The Lancaster Hot Air Balloon Festival fills the sky with vibrant colors and whimsy. Also incorporating the Lancaster Central Market with its historical and iconic building, gives the piece a solid presence. Lancaster Stormers Baseball Stadium ties the whole scene together giving a familiarity and a warmth for the fans. Joshua Rivaldo is a Pennsylvania-based artist.



Sang Eun Oh
CITY OF HOSPITALITY

There is a reason why Charleston's famous fountain features a pineapple, a symbol of hospitality. What makes Charleston feel so welcoming might be its lush natural surroundings, an abundance of Southern food, or warm-hearted people. Whichever the reason, its charm is unmatched. Local Sang Oh says, "It is truly a place I will never forget and forever cherish." Sang explores the small moments of everyday life in her art.

North Charleston, SC • Store No. 3367



Marissa Molina
MIDWEST CITY OF DREAMS

This mural is about highlighting the bright and vibrant energy of this Midwest City through its community. Soaring fighter jets zoom by representing the Tinker Air Force Base. Cowboys gallivant across the piece in a nod to the rodeo. A central female figure brings each of these elements together. With her eyes closed and face tilted upwards to the clouds, she keeps her head held high, symbolizing our desire to dream big.

Oklahoma City, WY • Store No. 3430



Shannon Jones
SACRED LAND

"As an Indigenous Woman (Dine'-Navajo) who resides on ancestral pueblo lands, I thrive and live in both my native world and modern society," says local artist Shannon Jones. In her vibrant style, filled with indigenous motifs, Shannon captures the unique culture and history of Albuquerque. "I wanted to portray that unique perspective that I and many walks of life have. Ahe'hee' for allowing my art to take up space."

"As an Indigenous Woman (Dine'-Navajo) who resides on ancestral pueblo lands, I thrive and live in both my native world and modern society. I wanted to portray that unique perspective that I and many walks of life have. Ahe'hee' for allowing my art to take up space."

– Shannon Jones



Faviola Ortiz Rivera
THE CAPITAL OF CULTURE

From the colorful houses of Old San Juan to the melody coursing in our veins; Puerto Rico stands proud. Local artist Faviola Anahys Ortiz Rivera says, "Oh what joy it is to listen to the song of the coqui, to feel the mountain breeze, and the sand on our feet. Our beautiful island stays as enchanting as ever." Faviola is inspired by island life to create colorful artworks that reflect the rich culture surrounding her.

San Juan, PR • Store No. 5803

Lindsey Kernodle
TAKE IT EASY NOW, MEMPHIS

Considered the home of the Blues and the birthplace of Rock N' Roll, few cities are as fundamental to the foundation of music as Memphis. This mural celebrates the influence of Memphis on American music. Here, moody colors capture landmarks like the Memphis Pyramid, world-famous Beale Street, and Memphis Bridge, while the guitar is inspired by those of renown Blues musician B.B. King, which he always named "Lucille".

Memphis, TN • Store No. 5122





Alyssa Castelluccio
LOWCOUNTRY DREAMSCAPE

This artwork highlights beautiful Folly Beach, one of Charleston's beloved coastal gems. To the left, the Fishing Pier stretches into the ocean, while children and baby sea turtles frolic in the sand. Front and center, we see the Folly Boat. Once washed ashore by Hurricane Hugo, it now sits as an impromptu canvas for artists. On the right, a Gullah artisan weaves a sweetgrass basket under the moonlight of the salt marsh.



Jill Chronister
ECHOES OF EXPLORATION

Sitting on a bluff above the Missouri River, Vermillion's rich culture and history symbolize the Great Plains spirit. The Might Mo' carves through the land as wildlife graze beneath the blue sky. Coyotes howl by the DakotaDome, one of the nation's first domes and home to the University of South Dakota's athletics. Spirit Mound Historic Prairie is where hikers can retrace the steps of legendary pioneers Lewis and Clark.

Vermillion, SD • Store No. 3734



Gayla Seale
LEWISBURG

Found in the hills of Marshall County, Lewisburg exudes a small-town charm where heritage, industry, and nature meet. Their famous fainting goats peek out from the flowers with one of their friends "fainted" on the grass. Downtown has lovely historic sights like the classic architecture of the Marshall County Courthouse. Henry Horton State Park is an outdoor paradise to bask in all the things that the Duck River offers.

Lewisburg, TN • Store No. 737

**THESE ARE THE ARTISTS
WHO'VE CONTRIBUTED TO
THE MURAL PROGRAM**

Adam Moke	Bailey Ruble	Daniel Smith	Gabrielle Abbott	Julia Fordyce	Lindsey Kernodle	Morgan Trask	Stacey Reynolds
Adam Stephenson	Banks Compton	Daniele Muzzi	Gabrielle Slivoski	Julia Wolinsky	Lindsey Leader	Morris Danila	Stephanie Martinez
Addison Green	Bekki Canine	Deanna Frye	Garth Glazier	Julie Vornholt	Lisa Quine	Nick Sirotich	Stephanie Miller Corfee
Aditi Heins	Ben Harrison	Delia Miller	Gayla Seale	Julie Xiao	Liz Vargas	Nicole Hunter	Stephen Yoon
Adrienne Luther	Blanca Estrada	Derek Brennan	Geno Okok	Justine Ross	Love Quetee	Noel Prisk	Stephish Liu
Aerica Raven Van Dorn	Bob Carlson	Derek King	Gillian Dreher	Kacy Momon	Lucinda L'Efant	Odessa Helm	Steven Casper
Aimee Bruce	Bonnie Turner	Devin Finley	Haley Kirton	Kaitlyn Embury	Maddie Allen	Pamela Mower-Conner	Susan Bielenberg
Almee Cozza	Brandon Long	Devin Wright	Hannah Legg	Kalegiro del Valle	Madeline Villalobos	Paul Maxwell	Susan Watkins
Alexa Maloney	Brendan Lamb	Dominique Ramsey	Heather Freitas	Karina Cruz Ortiz	Madeline Tipton	Peg Skalicky	Taylor C. Adams
Alxcis Moulds	Brett Tachi	Dorothea Taylor	Heather McCullough	Kate Fitzpatrick Katelyn Harbaugh	Madison Poole	Peniel Macias	Thais Bolton
Alisa Nikishin	Brianna Vela	Drake Arnold	Heidi Pitre	Kathleen Lenaghan	Maggie Tseng	R.I.O. Sirah	Theopolis Smith
Alison Moss	Brionya James	Drew D. Deming	Herb Willey	Kathleen Erin Lee	Malinda Raines	Rachel Dinda	Thomas Futyna
Aliison Bamcat	Cait Brennan	Efren Rebugio	Ivann Garcia	Katie Morris	Mallori Taylor	Rachel Hrbek	Thomas Velez
Allison Dunavant	Candy Mayer	Eli Portman	Jacqui Smith	Katy Fox	Marcus Fetch	Radhika Hersey	Thumy Phan
Allison Pence	Caoin O'Durgy	Elizabeth Newton	James Balkovek	Kealakukui Mahoney	Margot Cook	Raman Bhardwaj	Tim Bowden
Alondra Gonzalez	Carla Garrison-Mattos	Elsa De La Cruz Zarduz	Jamison Harper	Keely Hertzol	Marian Pham	Rebekah Slusher	Tommy McGee
Alyssa Ruby	Carlos Pons	Elsa Gonzalez De La Cruz	Jennifer Smiley	Kellene Turner	Marissa Molina	Renee Hopson	Tony Diaz
Amanda Newman	Caro Nilsson	Elvis Matthews	Jered Fykes	Kelly Sheridan	Mark Montgomery	Rita Sabler	Tracy Ann Holmes
Amanda Howell Whitehurst	Carolyn Adkins	Elyssa Leininger	Jessica Rodgers	Kelsey Grass	Mark Viser	Robyn Brimley	Trotter Alexander
Amelia Kaiser	Catherine Lallier	Emily Alvarez	Jessica Beach	Kelsey Phillips	Maxim Shirkov	Rodrigue Ben	Trudy Tran
Andrea Butler	Cathy Chiao Lin	Emily Burnham	Jill Sanders	Kendall Faber	Melinda Patrick	Rose Anne Ost	Val Hague
Andrea Polzin	Charles Clear	Emily Luyk	Jill Chronister	Kenzi Patterson	Melissa Jacobsen	Roxanne Correll	Vanessa Gomez
Andrew Houser	Charles Swerdlow	Emily E. Jones	Joel Boyd	Kerian Massey	Melissa Stratton-Pandina	Samuel Wilson	Vernon Ingran
Aniya Thorne	Chase Henson	Emma Brittain-Hardy	Joel Bullock	Kerri Warner	Mi'randa Villanueva	Sang Eun Oh	Victoria Lane
April Lavelly-Robinson	Christian Bachez	Emmanuelle Mariategue	Joel Valdez	Kristin Altine	Michael Rangel	Sarah Egan	Willea Zwey Yang
April Harris	Christopher Najera	Esther Moorehead	John Osgood	Kurt Chang	Michael Arguello	Sarah Pederson	William Lunsford
Ashton-Kaleigh Narlock	Clarissa Martinez	Esther Sitver	Jordan Jones	Kurtis Edwards	Michaela Yarbrough	Sergio Arce	William Sweeney
Austin Fowler	Cris Clapp Logan	Fabiola Gonzalez	Jordan Abba	Kylee Firlit	Michelle Ware	Shane Douberly	Xochitl Cornejo
	Damon Smith	Faviola Ortiz Rivera	Joshua Rivaldo	Laura Larabee	Micki Flior	Shannon Jones	Yetti Frenkel
	Dan Terry		Josie Crews	Laura Walker	Molly Mendenhall	Shayne Taylor	Yifat Fishman
				Liliana Lennox	Morell Collins	Sophie Groenstein	Yujie Huang
				Linda Sholberg	Morgan Sorne	Stacey Almgren	Zach Medler

